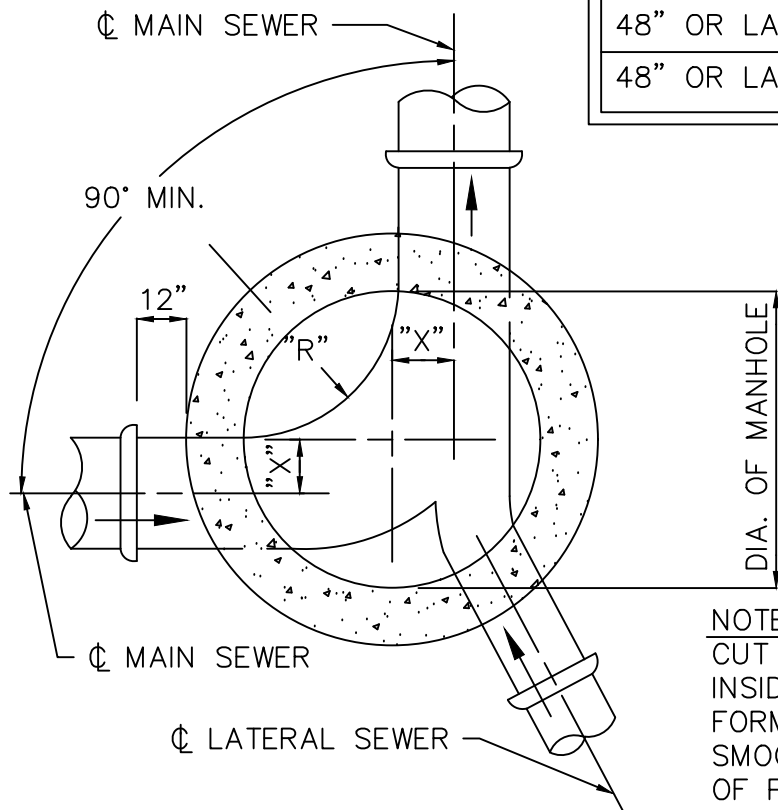


STANDARD MANHOLES SCHEDULE OF GOVERNING DIMENSIONS

PIPE SIZE	ANGLE △	MANHOLE DIAMETER	"R"	"X"
8" TO 15"	0° TO 90°	4'-0"	2'-0"	0"
18" TO 30"	0° TO 90°	5'-0"	2'-0"	6"
36" TO 42"	0° TO 60°	6'-0"	3'-0"	9"
36" TO 42"	60° TO 90°	6'-0	3'-0"	1'-2"
48" OR LARGER	0° TO 45°	7'-0	4'-0"	6"
48" OR LARGER	45° TO 90°	8'-0	3'-0"	1'-3"



NOTE:

1. EXCLUDING SERVICE CONNECTIONS LESS THAN FIFTY THOUSAND (50,000) GPD, SEWER CONNECTIONS TO GRAVITY SEWER LINES SHALL BE CONSTRUCTED SUCH THAT THE INTERNAL ANGLE OF DEFLECTION IS EQUAL TO OR GREATER THAN NINETY (90) DEGREES, INCLUDING CONNECTIONS AT MANHOLES. ANGLES LESS THAN THE REQUIRED NINETY (90) DEGREES MAY BE CONSIDERED ON A CASE-BY-CASE BASIS, WHEN THERE IS ADEQUATE JUSTIFICATION (E.G., DROP THROUGH THE MANHOLE) PROVIDED.

NOTE

CUT ALL PIPE FLUSH WITH INSIDE WALL OF MANHOLE FORM INVERT UNIFORM AND SMOOTH. CUT OFF TOP HALF OF PIPE AT WALL.

HILTON HEAD NO. 1
PUBLIC SERVICE DISTRICT

TYPICAL PLAN STANDARD MANHOLE

APPROVED BY: XXXXXXX	DATE: Feb. 1997	DRAWING NO. XII-5
SCALE: NTS	REVISED: Jan. 2024	