



LIQUID

E-NEWSLETTER

'Take the Pledge' for water conservation

**SAVE WATER.
SAVE THE PLANET!**

WYLAND National Mayor's
Challenge for Water Conservation

WYLAND
FOUNDATION

MWDOC.com

mywaterpledge.com

A vertical poster with a background image of a surfer in a black wetsuit riding a wave. The text "SAVE WATER. SAVE THE PLANET!" is at the top in white. Below the image, it says "WYLAND National Mayor's Challenge for Water Conservation". At the bottom, there are three logos: the Wyland Foundation logo, the MWDOC.com logo, and the mywaterpledge.com website address.

The Town of Hilton Head, Hilton Head PSD, South Island PSD and Broad Creek PSD are working together to encourage residents to take the Wyland National Mayor's Challenge for Water pledge this summer.

Throughout August, the 9th Annual Mayor's Challenge for Water asks communities throughout the United States to make small changes that better manage our water

resources and improve the health of our ocean, lakes, rivers, streams, and wetlands.

For Hilton Head Island residents, this is a good time to remember to comply with the Town of Hilton Head ordinances that limit irrigation to two days a week and to use a working rain sensor on all irrigation systems.

“We annually see 40 to 60 percent of our treated drinking water on Hilton Head Island being used for residential landscape irrigation,” said Hilton Head PSD General Manager Pete Nardi. “It’s a paradigm we’d like to start a conversation about shifting.”

“A great way to start is to check out Clemson University Extension Service’s ‘Carolina Yards’ sustainable landscape management program,” Nardi said. “You can learn landscape management principles that help protect our local watershed and provide you with a healthy, stress-free landscape.”

Read
More

JOIN OUR FACEBOOK GROUP

RESPONSIBLE LANDSCAPING
& GARDENING



Join PSD's Facebook Group!

Let's keep the conversation about water conservation going! The purpose of the Facebook Group is to encourage responsible irrigation, landscaping and gardening. ☐ ☐ Take us on a virtual tour of your gardens, yards, landscaping by posting photos. Share tips and resources.

[JOIN HERE](#)

WATER EFFICIENCY RESOURCES

Small Steps Make a World of Difference

☐ Our precious drinking water is finite.

Only 2% of the Earth’s fresh supply of water is locked in ice caps and glaciers, while 975% of

the earth's water is saltwater.

That's why it's important to do your part to conserve our precious drinking water:

- ☐ Limit irrigation to two days a week
- ☐ Take shorter showers
- ☐ Fix leaks around the house
- ☐ Use native plants that thrive on rainfall in your landscape



Learn
More



COLLEGE OF AGRICULTURE, FORESTRY & AGRICULTURE

Clemson Extension helps improve the quality of life of all South Carolinians by providing unbiased, research-based information through an array of public outreach programs in youth development; agribusiness; agriculture; food, nutrition and health; and natural resources.



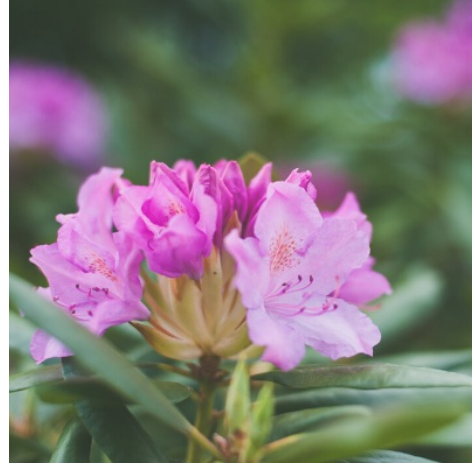
CLEMSON EXTENSION'S CAROLINA YARDS

Clemson Extension's Carolina Yards program seeks to work with residents in creating healthy, watershed-friendly landscapes. Use simple and effective gardening methods to help guide you towards a low maintenance yard that works with nature, rather than against it.



SOUTH CAROLINA NATIVE PLANT SOCIETY

The South Carolina Native Plant Society was founded in March of 1996 by a diverse group of folks interested in promoting the awareness and education of native plant species and their importance in the South Carolina landscape and history. Native plants and the native landscape in many ways define us as a state and a people, giving us a sense of belonging, a sense of place. Native plants are our heritage.



HOME AND GARDEN INFORMATION CENTER

The Home & Garden Information Center (HGIC) provides research-based information on landscaping, gardening, plant health, household pests, food safety & preservation, and nutrition, physical activity & health. HGIC is designed to complement Clemson's network of professionals and volunteers by answering the routine types of calls and thereby freeing agents to deal with commercial agriculture/horticulture questions and conduct proactive programming to larger audiences.

Don't get caught off guard this hurricane season.

Hurricane seasons runs through the end of November. While the Lowcountry has had a few scares the past two years, the last hurricane to truly impact Hilton Head Island was Hurricane Matthew in 2016.

While Hilton Head PSD did not see any lasting effects from Hurricane Matthew, it's still important to remember that the public water and

ONLINE HURRICANE RESOURCE CENTER

sewer system could be seriously impacted by a hurricane. Remember to follow all public advisories related to utility service availability in the aftermath of a hurricane.

Be prepared.
Visit hhpsd.com!



Visit PSD's online Hurricane Resource Center for:

- ☐ How to preserve water
- ☐ How to purify stored water
- ☐ How to protect your water heater
- ☐ How to turn off your water meter
- ☐ And much more ...

Read
More

DO NOT FLUSH & DO NOT TRASH

There's a proper way to dispose of medications

There are three drop-off boxes in Beaufort County that are safe places to properly dispose of extra or unused prescription medications instead of flushing them into the PSD's sanitary sewer system:

- The Beaufort County Sheriff's Office on Hilton Head, located at 58 Shelter Cove Lane.
- Beaufort County Government Building, 4819 Bluffton Parkway in Bluffton.
- The Beaufort County Sheriff's Office,

located at 2001 Duke Street in Beaufort.



[Read
More](#)

Online Billing

- ☐ Pay your bill or check your account online! Here's how it works:
- ☐ To login and view your account or to pay your bill, you will need to use your PayID or account number and address number. Your PayID and account number can be found on your water bill.
- ☐ Your default password is the first word or number in your mailing address number, which you can change once you register.
- ☐ If you want, set up recurring bill pay so you never miss a payment!

[Read
More](#)

Hilton Head PSD Affiliations

We are proud to partner with the following organizations.





MORE
INFORMATION

